

There are designated days for garbage collection. Check the Garbage Calendar for more information. Put out your garbage at the collection point **by 8:30 a.m.** on the designated collection days.

Garbage collection points are managed by the users. To start using one, contact the manager of the collection point.

# Sanbu District City Environmental Sanitation Union Garbage Disposal Rules

Follow the rules and dispose of garbage appropriately.

For items that do not fit in the designated garbage bags (mouth cannot be close), apply for home collection of oversized garbage or bring the garbage directly to the Union.

Cooperate with proper sorting.

## To Protect Limited Resources and the Earth

Some plastic shopping bags that you purchase at stores can be reused as bags for burnable garbage.

Seimiya Matsuo Store, Landrome Food Market Sammu Store, BIG HOUSE Yokoshiba Store

Garbage Sorting Reference



<https://www.gomisaku.jp/0321/>

Garbage Sorting App (for iOS)



<https://perze.jp/app/0291/ios/>

Garbage Sorting App (for Android)



<https://perze.jp/app/0291/android/>

Website



<https://sankan.chiba.jp/wordpress/>

## Burnable garbage

- Kitchen waste** [Drain before disposal]
- Leather items** (Shoes, bags, belts, etc.)
- Plastic items** (Toys, containers for shampoo/detergent, CDs/MDs, etc.)  
Dispose of plastic tanks as **non-burnable garbage** since there is danger of burnable gas remaining inside.
- Rubber items**
- Paper items** (remove waste from disposable diapers)
- Wooden items** [Cut to pieces with a thickness of 10 cm or less and length of 30 cm or less] (Wooden boards, sticks, branches, etc.)
- Extruded polystyrene foam** [Break into small pieces and place in a bag]
- Other** (Small cushion, stuffed dolls, mowed grass [remove soil], cigarette butts, etc.)

**Notes**

- Use up shampoos, detergent and the like before disposal.
- Cut blue tarps and other large objects into pieces of 30 cm or less.

## Recycle garbage

- Cans and glass bottles (can be mixed)**
  - Cans: Only those that contained juice, alcohol and other beverages.
  - Glass bottles: Only those that contained juice, alcohol, seasoning, food, medicine or cooking oil.

Make sure to remove bottle caps.  
Empty the contents and wash cans and glass bottles before disposal.
- PET bottles**
  - Only those that contained **beverages or seasoning**.
  - Must have a **PET Mark**.
  - Remove caps and labels.
  - Empty the contents and **wash the insides**.

Dispose of containers for shampoo, detergent or the like as **burnable garbage**.

**How to dispose of PET bottles**

  - Wash the insides
  - Sort

Dispose of caps and labels as **burnable garbage**.  
Dispose of the PET bottle as **recycle garbage**.
- Clothing**

Do not get items wet. (Make sure to close bags tightly to prevent them from becoming soaked in rain.)  
Note: Dispose of underwear, socks and highly damaged items as **burnable garbage**.
- Magazines**

Do not get items wet. (Make sure to close bags tightly to prevent them from becoming soaked in rain.)  
Note: Textbooks, books and dictionaries are also collected.
- Paper cartons**

Only for those that contained **beverages**.  
**Wash the insides**, cut open and let dry before disposal.  
Note: Dispose of items with aluminum insides as **burnable garbage**.
- Cardboards**

Do not get items wet. (Make sure to close bags tightly to prevent them from becoming soaked in rain.)

Notes:

  - Dispose of items coated with wax or the like as **burnable garbage**.
  - Cut large items into pieces that will fit in the bags.
- Other fabrics**

Do not get items wet. (Make sure to close bags tightly to prevent them from becoming soaked in rain.)  
Note: Only sheets, curtains, towel-blankets and *tanmono* will be collected.
- Newspaper**

Do not get items wet. (Make sure to close bags tightly to prevent them from becoming soaked in rain.)  
Note: Ads and flyers are also collected.
- White food trays (white polystyrene foam)**

Only for items that contained **food**.  
**Wash** and let dry before disposal.  
Note: Dispose of colored items, those with words or other designs printed on them, and soiled items as **burnable garbage**.

## Non-burnable garbage

Place garbage of each category below (marked with a ●) in separate bags. (Bags with items not subject to collection mixed in will not be collected.)

- Ceramic and glass items** (Rice bowls, plates, flowerpots, cosmetic bottles, broken bottles, window glass, glass scraps, mirrors, cups, etc.)  
Wrap broken glass and the like in paper before placing it in the bag.
- Small home appliances** (Music players, vacuum cleaners, speakers, video cameras, clocks, water boilers, etc.)  
Delete any personal information in appliances.
- Metals and other** (Tabletop cooking stoves, gas canisters, canned food cans, confectionary cans, pots, kettles, umbrellas, extension cords, electric cords, plastic tanks, videotapes, spraying cans, blankets, sitting cushions, water hoses, pillows, etc.)  
Umbrellas can stick out of the bags.  
Make sure to empty the contents of gas canisters and spraying cans before disposal.

**Notes**

- Dispose of the contents of canned food as **burnable garbage**.
- Soak cosmetics and other nonflammable liquids in fabric or the like, and dispose of them as **burnable garbage**.
- Items that do not fit in the designated bags must be disposed of as oversized garbage.

## Hazardous garbage

- Used dry-cell batteries**
- Mercury thermometers**
- Lightbulbs and fluorescent tubes**  
Long fluorescent tubes can stick out of the bags.  
Wrap lightbulbs and fluorescent tubes in paper or the like and place them in the designated bags.
- Mobile batteries and electronic cigarettes**  
Insulate the metal terminal parts with tape or the like.
- Lighters**
- Blades**  
Place removable blades such as boxcutter blades in a can or the like. Wrap kitchen knives and the like in fabric and label it "刃物 (はもの; blades)".

Empty the contents before disposal.

## Oversized garbage

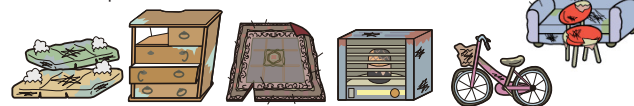
Apply for home collection

Applications: 0479-86-3516

- There are designated collection days. Check the Garbage Calendar.
- Those who live within the jurisdiction of the Union may use this service.
- Oversized garbage refers to garbage that does not fit in the designated bags.
- Garbage from business activities will not be collected.

### Usage procedures

- Application (you must apply by noon on the day before the collection day)**  
Call the number above and tell the operator your name, address, contact information, and the item and amount to be collected.
- Purchase an Oversized Garbage Sticker and attach it to the item to be collected.**  
A sticker must be purchased for each item to be collected. The stickers can be purchased at stores that sell designated garbage bags.
- Place your item at a location that can be seen from the road, such as your yard, by 8:30 a.m. on the collection day.**  
Note: Do not place it near items that will not be collected.



## Bringing in garbage directly to the Union

Applications: 0479-86-3516

- You do not need to use designated bags or purchase Oversized Garbage Stickers.
- You are responsible for unloading the garbage from your vehicle. Follow the instructions of the staff.
- Cut branches and the like into pieces with thickness of 10 cm or less and length of 1 m or less. Up to 1 ton will be collected at a time. Cut blue tarps and the like into about pieces of 50 cm.
- We may restrict you if you plan on bringing in a large amount of tatami mats at one time.
- Make sure to sort your garbage at home so that it can be unloaded promptly.
- You can also bring in animals carcasses.

Days	Monday to Friday (excluding national holidays and the year-end/New Year's holidays)	Second Sunday of every month
Hours	9 to 11 a.m., 1 to 4 p.m.	9 to 11 a.m. (closed in the afternoon)
Reservations	You must make a reservation by phone on the day before your desired date. Note: If the previous day is a Sunday, national holiday or the facility is closed, call on the preceding weekday (Monday to Friday).	You must make a reservation by phone in advance (Monday to Friday, excluding national holidays). Note: You can make reservation up to two weeks in advance.
Fees	<ul style="list-style-type: none"> <li>Garbage processing fee: ¥100 per 10 kg (¥100 for all amounts up to 10 kg)</li> <li>Animal carcasses: ¥500 each</li> </ul>	

## Home Appliance Recycling Act Items

These items are not collected by the Union.

- The Home Appliance Recycling Act came into effect on April 1, 2001, requiring that **air conditioners, televisions, refrigerators, freezers, washing machines, and clothes dryers** be recycled. (You cannot dispose of them at collection points or bring them into the Union facility.)

### Recycling methods

- Recycle these items using one of the methods below.
- Method 1: Ask the retailer where you purchased the item or its replacement to collect the item.
- Method 2: Pay the recycling fee at a post office and bring the item to a designated collection site on your own.
- Method 3: Contact a Union-certified collection company (contact each company for fees and other information).

### Union-certified collection companies:

Shinko Sangyo, Tel: 0479 (86) 5769 Gendai Kogyo, Tel: 0479 (74) 7887

Designated collection sites	Recycle fees (reference; actual fees vary by manufacturer)				
	Televisions (15 inches and smaller)	Televisions (16 inches and larger)	Refrigerator/freezers (170 l or less)	Refrigerator/freezers (171 l or more)	Washing machines/clothes dryers
Eco-mine, 604-5 Tokura, Tomisato City, Tel: 0476 (94) 0050 Nippon Express, 1-8-7 Osaku, Sakura City, Tel: 043 (498) 0856 Nanso Transport Mobarra Branch, 1193-1 Yamanne, Nagara-machi, Chosei District, Tel: 0475 (30) 7333	From ¥990 per item	From ¥1,320 per item	From ¥2,420 per item	From ¥3,740 per item	From ¥4,730 per item

### Inquiries:

For questions about recycling fees and whether or not an item is subject to the Home Appliance Recycling Act, contact the Association for Electric Home Appliances Recycle Ticket Center (Tel: 0120-319-640).  
Website: <https://www.rkc.aeha.or.jp>

イラスト出典: 経済産業省ウェブサイト <https://www.meti.go.jp>  
日本容器包装リサイクル協会

### Notes for garbage disposal

Dispose of burnable garbage at burnable garbage collection points, and dispose of non-burnable, recycle and hazardous garbage at non-burnable garbage collection points. Non-burnable, recycle and hazardous garbage are collected by type, so it may take several days for collection to be completed. Please note that the burnable garbage and non-burnable garbage collection points for your area may be different. Collection may be suspended due to weather conditions such as typhoons and snowstorms.

## Garbage Processing Facility Sanbu District City Environmental Sanitation Union

1149-1 Kanno, Matsuo-machi, Sammu City Tel: 0479-86-3516, Hours: 8:30 a.m. to 5:15 p.m.

Days for bringing in garbage:

Monday to Friday (excluding national holidays) Hours: 9 to 11 a.m., 1 to 4 p.m.

Second Sundays Hours: 9 to 11 a.m.